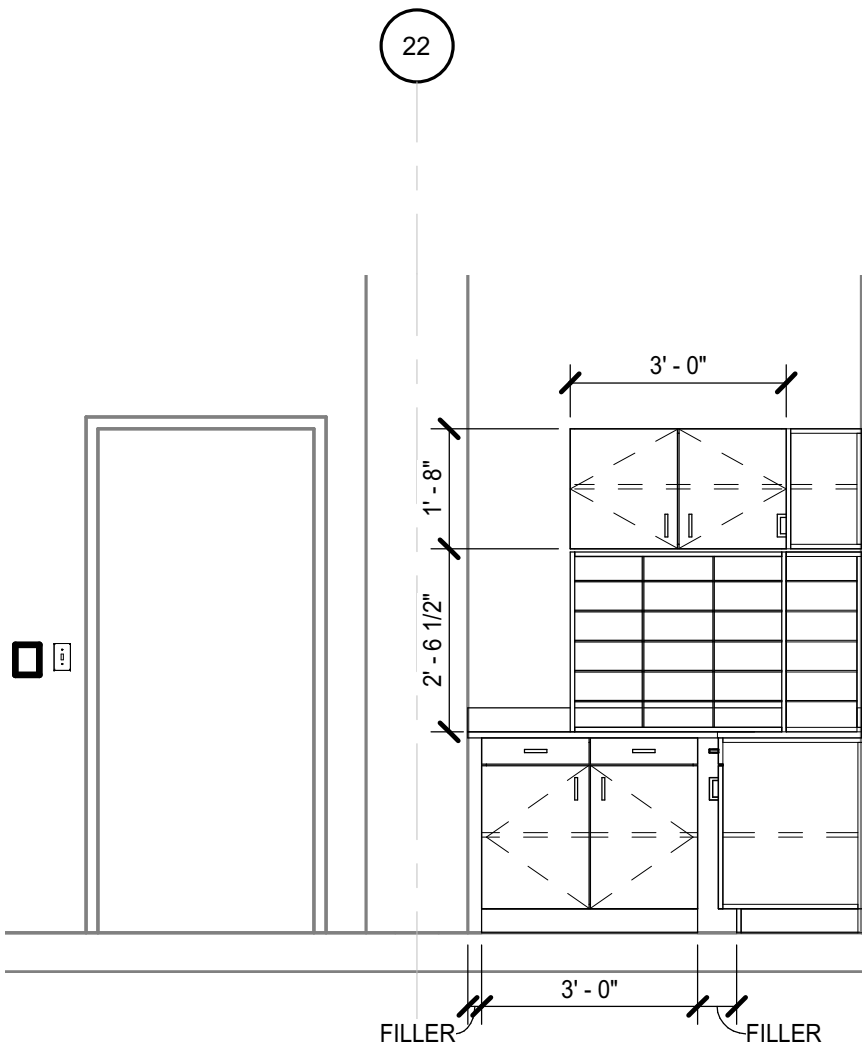
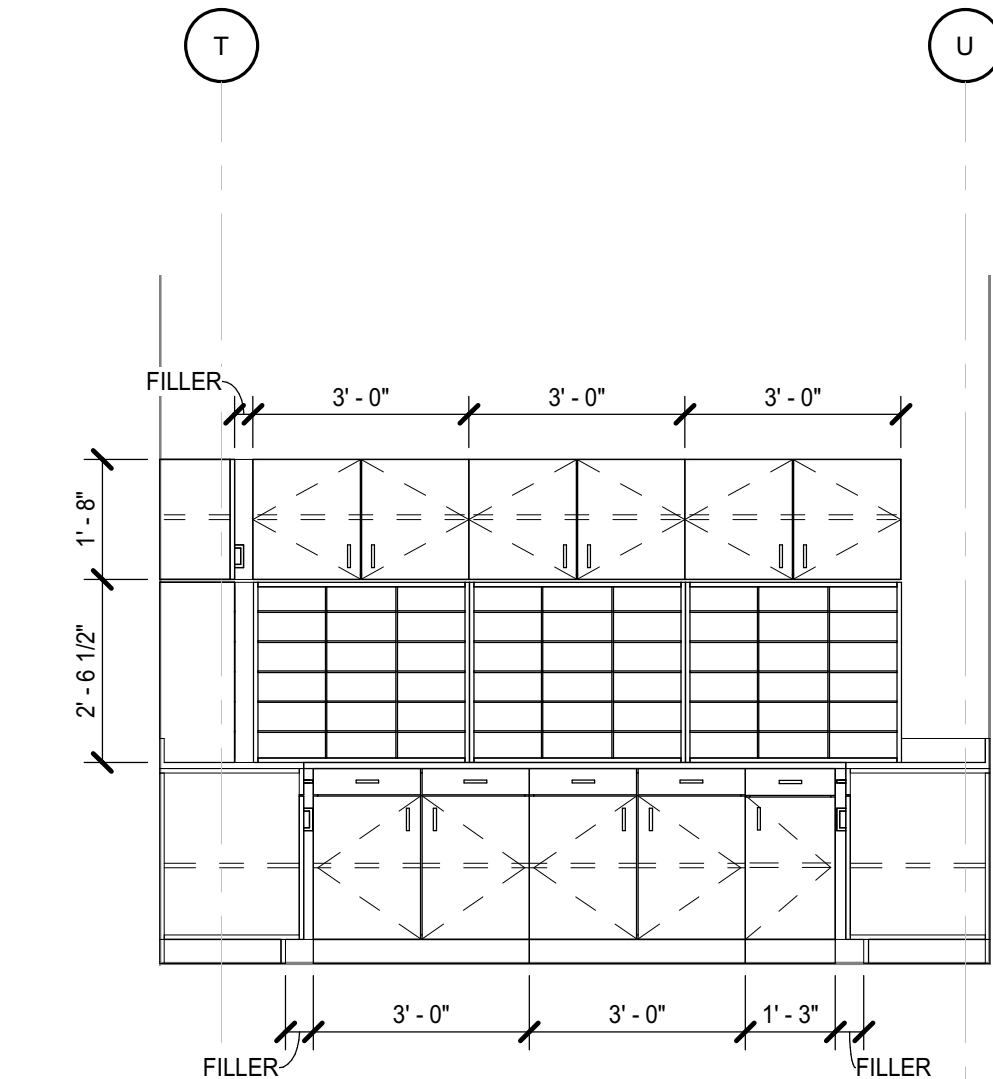


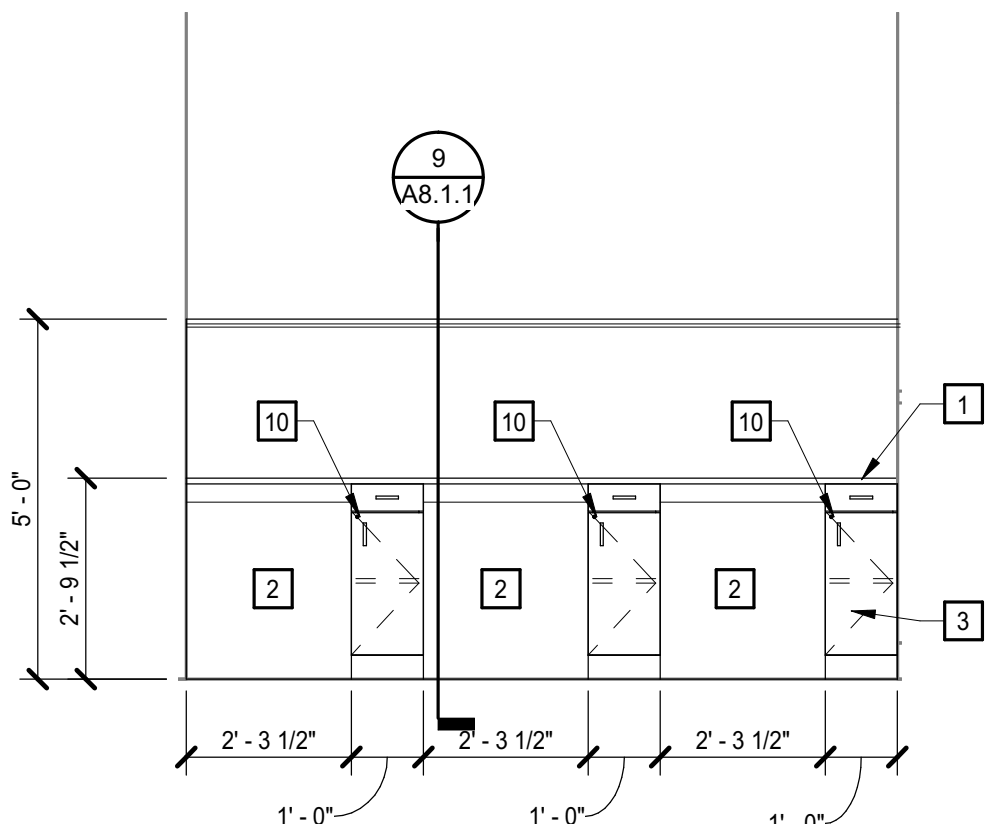
9 MILLWORK SECTION
3/4" = 1'-0"



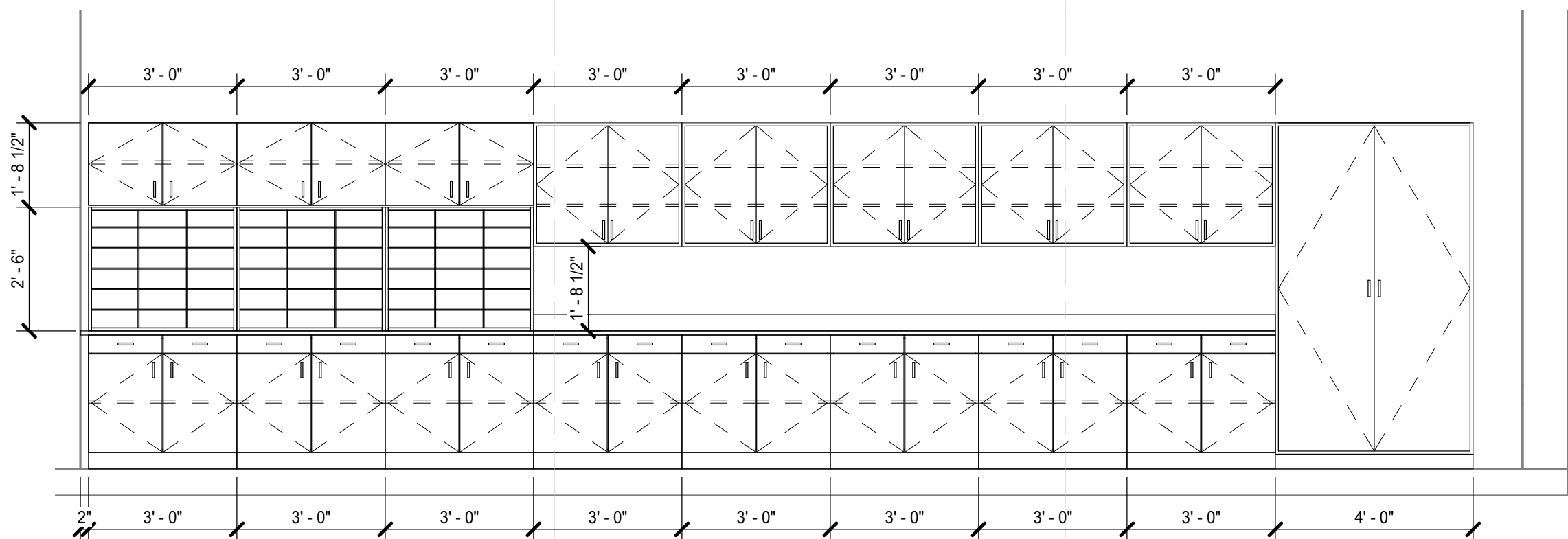
6 MILLWORK ELEVATION
3/8" = 1'-0"



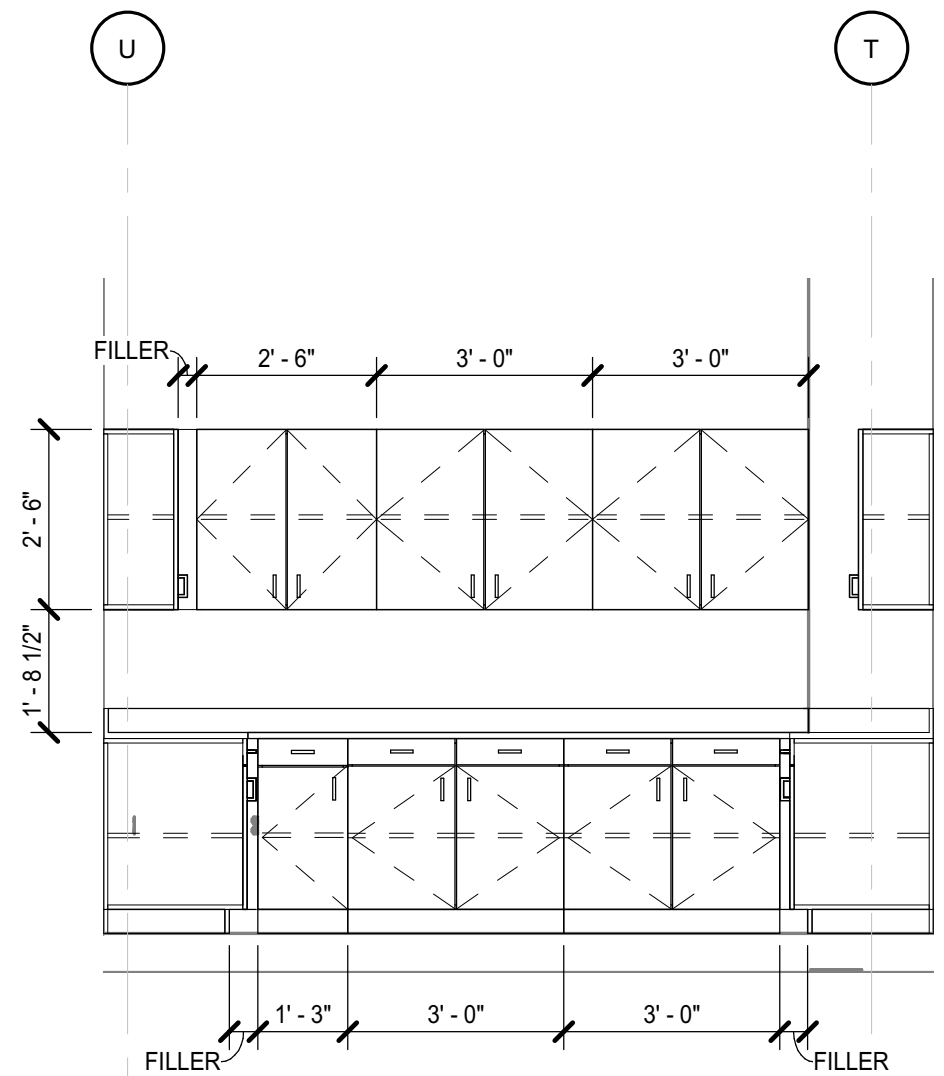
7 MILLWORK ELEVATION
3/8" = 1'-0"



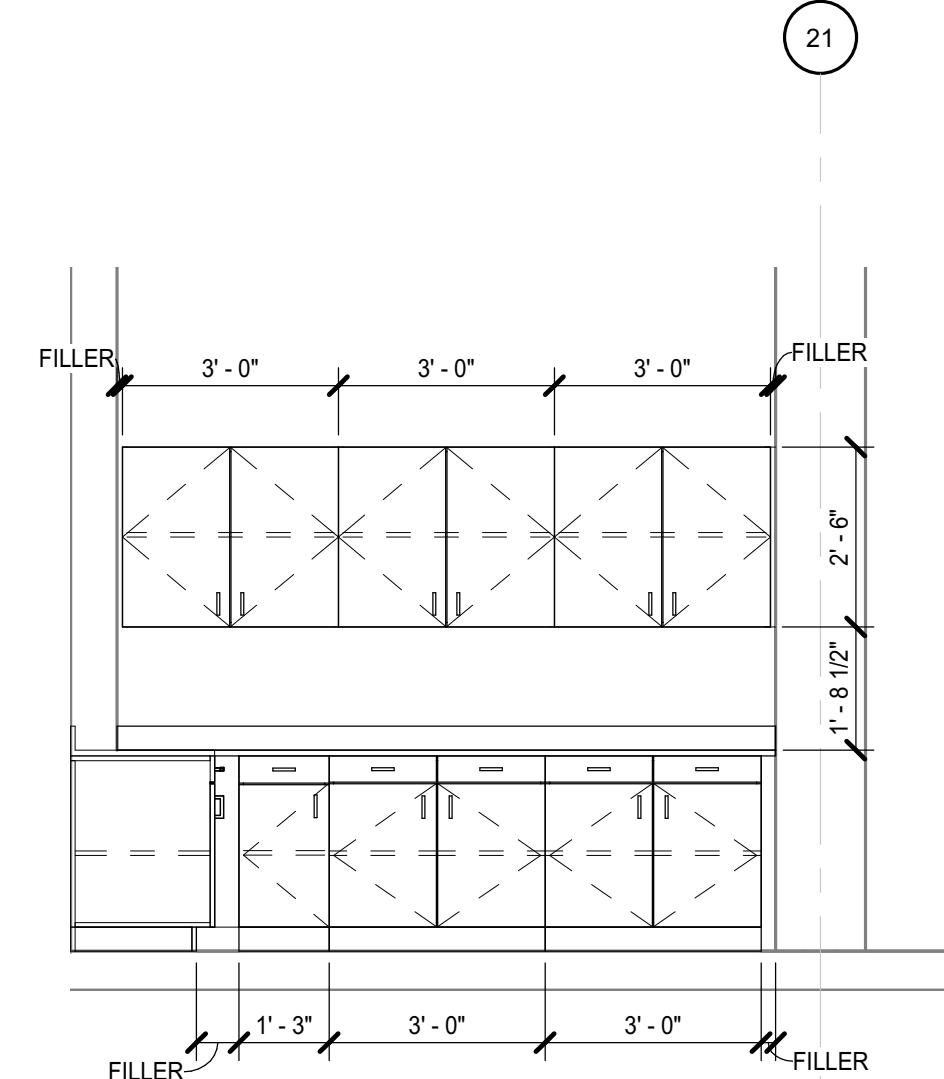
8 MILLWORK ELEVATION
3/8" = 1'-0"



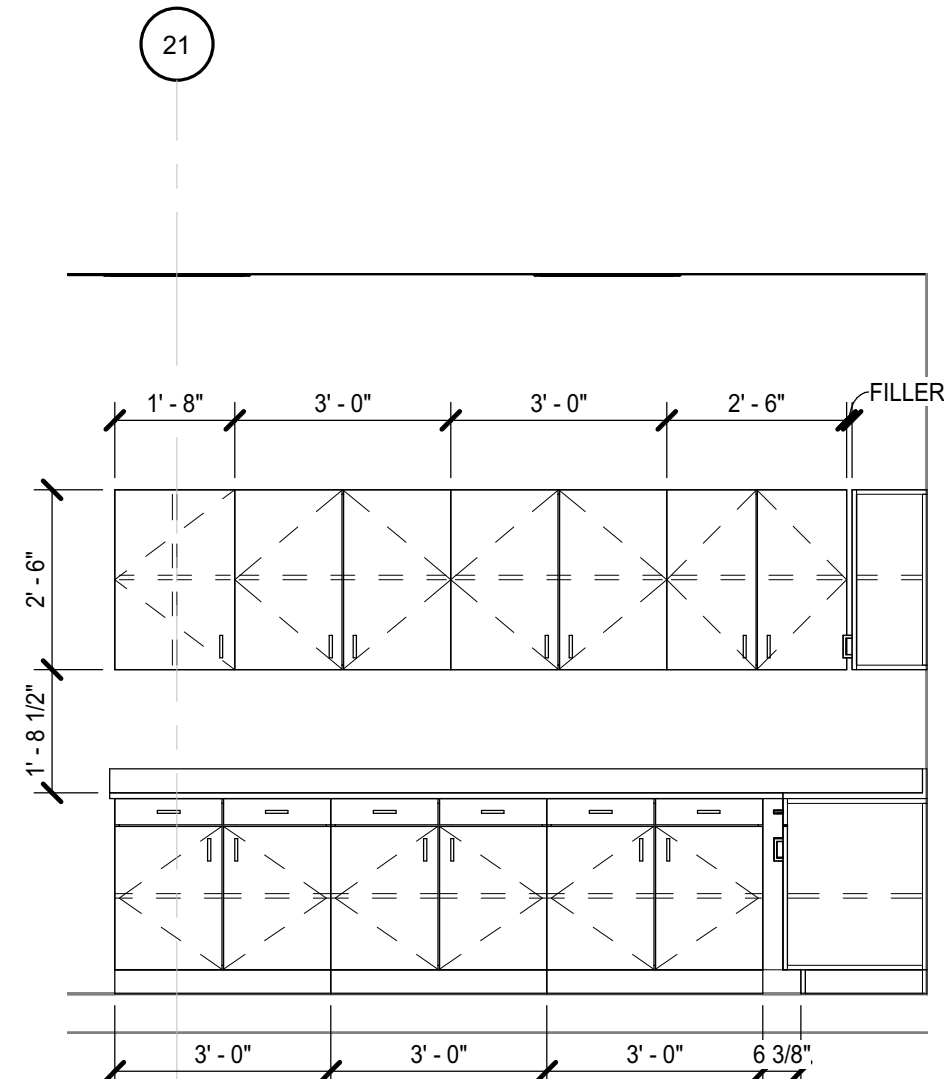
1 MILLWORK ELEVATION 1008
3/8" = 1'-0"



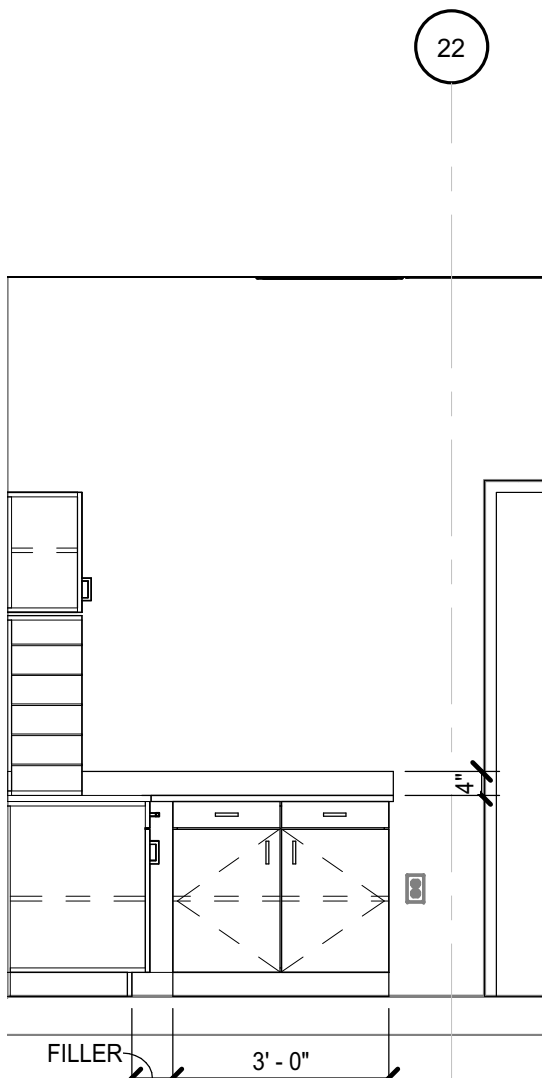
3 MILLWORK ELEVATION
3/8" = 1'-0"



4 MILLWORK ELEVATION
3/8" = 1'-0"



5 MILLWORK ELEVATION
3/8" = 1'-0"



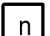
2 MILLWORK ELEVATION
3/8" = 1'-0"



MILLWORK GENERAL NOTES

- A. UNLESS INDICATED OTHERWISE, ALL COUNTERTOPS:
- MIN 2'-9", MAX 2'-10" AFF TO TOP OF SURFACE
 - 2'-0" DEEP
 - 1/2" THICK SOLID SURFACE WITH 1" EDGE PROFILE, EASED EDGE
 - BACKSPLASHES: 4' HIGH SOLID SURFACE ALL SIDES AND BACK, UNO
- B. UNLESS INDICATED OTHERWISE, ALL BASE CABINET(S):
- 23" DEEP NOMINAL
 - TOE KICKS: 4" HIGH AND 3" DEEP
- C. UNLESS INDICATED OTHERWISE, ALL WALL CABINET(S):
- 12" DEEP NOMINAL
 - 2'-6" HIGH
 - TOP AT 7'-0" AFF
- D. PROVIDE SOLID BLOCKING FOR ALL WALL MOUNTED ITEMS
- E. INSTALL RUBBER BASE ON THE BASE OF ALL MILLWORK
- F. ALL MILLWORK TO BE HIGH PRESSURE LAMINATE
- G. PROVIDE FINISH END PANELS AT ALL EXPOSED MILLWORK ENDS.
- H. TALL STORAGE CABINETS SHALL BE SECURED TO THE WALL TO PREVENT TIPPING
- I. PROVIDE MILLWORK LOCKS WHERE NOTED; PROVIDE (2) KEYS PER LOCK

CASEWORK KEYNOTES

REPRESENTED BY 
APPLIES TO DRAWINGS A8.1 - A8.n

- 1 SOLID SURFACE COUNTERTOP, NO BACKSPLASH
- 2 KNEE HOLE
- 3 HIGH PRESSURE LAMINATE MILLWORK, TYP
- 4 RESILIENT BASE
- 5 APRON
- 6 PLYWOOD BASE
- 7 1-1/2" x 5" HARDWOOD CAP; TRANSPARENT STAIN TO MATCH LAB CASEWORK
- 8 BLACK ABS REVEAL; 1/2"
- 9 SCHEDULED WALL
- 10 5-PIN TUMBLER LOCK

Dobo Hall Renovation - Package A

SCO PROJECT NO. 18-19798-01A
UNC Wilmington
4978 CAHILL DR, WILMINGTON, NC 28403

PROJECT NO. 5809999 DATE MARCH 27, 2019

REVISIONS

DATE DESCRIPTION

MILLWORK
ELEVATIONS AND
DETAILS

A8.1.1

MOSELEYARCHITECTS

911 N. WEST STREET, SUITE 205 RALEIGH, NORTH CAROLINA 27603
PHONE (919) 843-0691
MOSELEYARCHITECTS.COM

PROGRESS
PRINT NOT FOR
CONSTRUCTION
MOSELEY J. LOCKE
ARCHITECT
RALEIGH, NC

PROFESSIONAL SEAL
STATE OF NORTH CAROLINA
ARCHITECT
52282
MOSELEY J. LOCKE
ARCHITECT
RALEIGH, NC